



perfect

Contenido

Bicromatado

12–17



Cabeza plana, ranura en cruz Z
templado, revestimiento sintético

Galvanizado

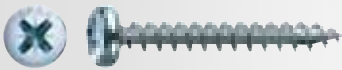
20–23



Cabeza plana, ranura en cruz Z
templado, revestimiento sintético

Cabeza redonda

26–27



Cabeza redonda, ranura en cruz Z
templado, revestimiento sintético

Cabeza gota de sebo

30–31



Cabeza gota de sebo, ranura en cruz Z
templado, revestimiento sintético

Especial

34–35



Cabeza plana, ranura en cruz Z
templado, revestimiento sintético



Inoxidable

38-39



Cabeza plana, ranura en cruz Z
templado, revestimiento sintético



Terrazas, postes y vallas

42-43



SPAX Terrazas – Cabeza cilíndrica, *T-STAR plus*
hilo de sujeción, inoxidable



SPAX tornillo poste INOX



SPAX conector de vallas INOX



Construcción de madera

46-47

SPAX HI.FORCE

Acero templado, cabeza arandela, *T-STAR plus*, WIROX



SPAX IN.FORCE

Acero templado, cabeza cilíndrica, rosca total, *T-STAR plus*, WIROX

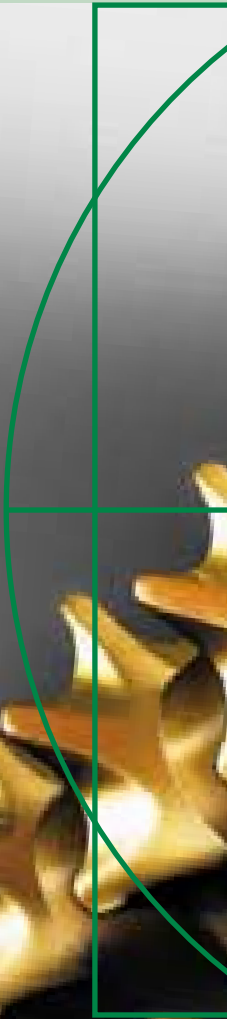


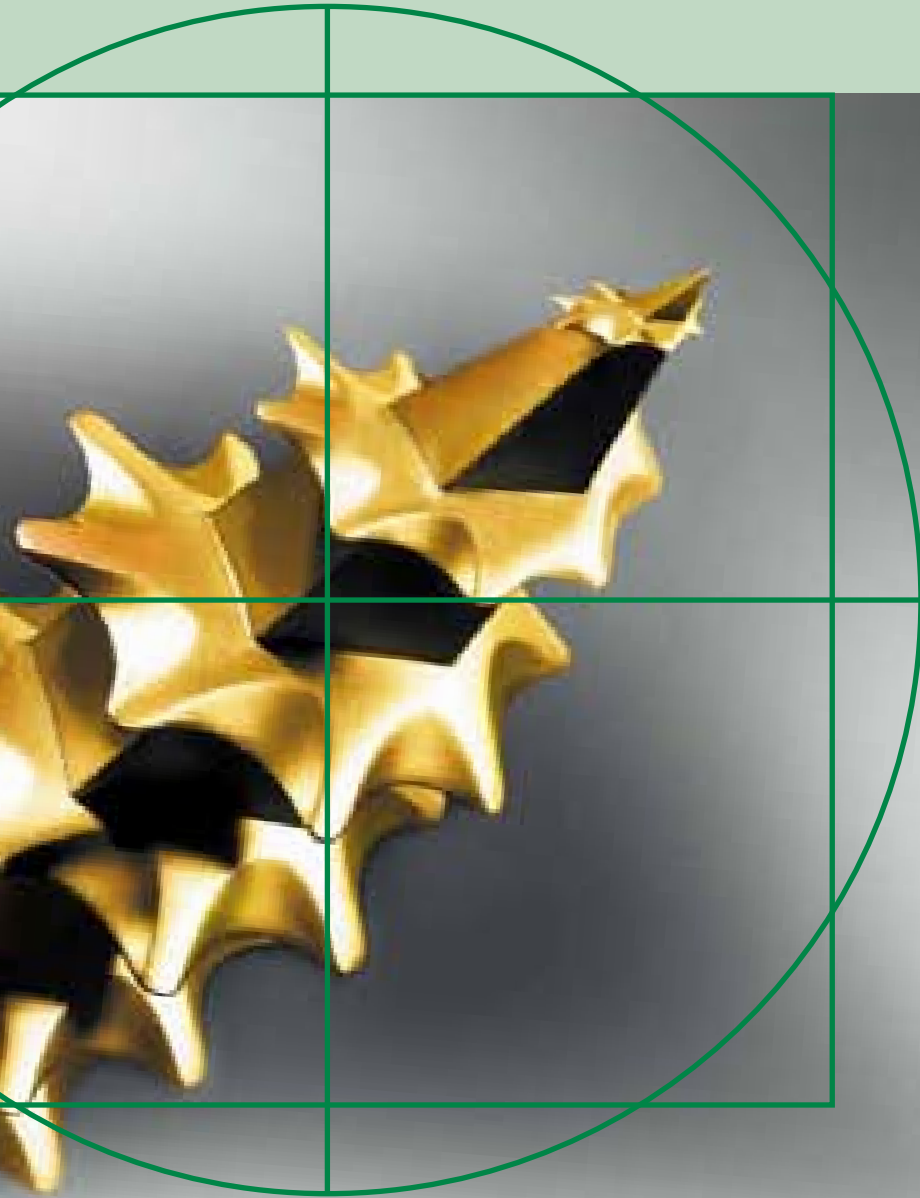
SPAX-M

50-51

Tornillo para MDF







Nuevos Expositores de Bricolaje

Nuevo etiquetado

Todo de un vistazo

Con el nuevo diseño de etiquetas, ABC marca de nuevo diferencias. La inequívoca indicación de cantidades y medidas, junto con las ilustraciones del producto, le dan la seguridad de haber elegido el tornillo apropiado.

Sistema de reconocimiento mediante colores

Gracias a los seis colores, nuestras estanterías atraen de lejos y permiten encontrar el tornillo idóneo con rapidez y facilidad.

La estructuración vertical de los diferentes tipos y medidas es clara y sencilla para el usuario.

Tamaño de los envases y medidas

ABC le ofrece el tipo apropiado y la cantidad correcta de tornillos que necesita para su aplicación. Y además de modo respetuoso con el medio ambiente, con materias primas reciclables.

SPAX – ¡Asumimos la responsabilidad!

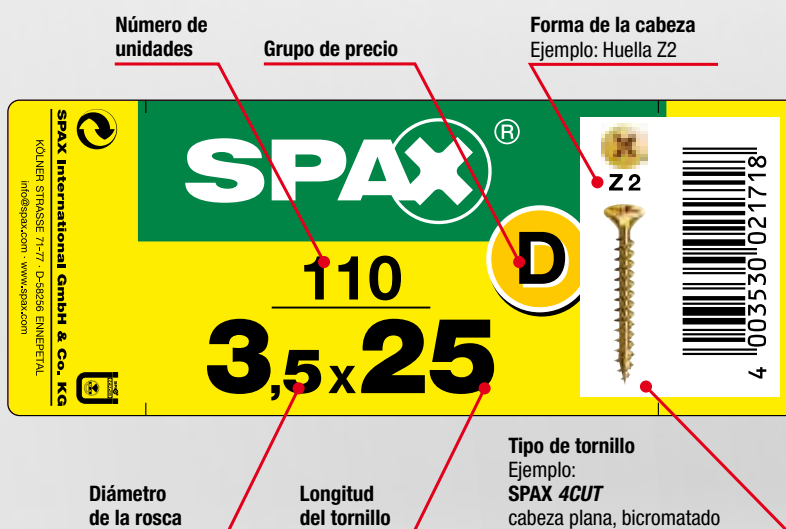
Fácil reconocimiento del precio

Los grupos de precios se indican con una letra de gran tamaño, unificando tamaños y tipos, ahorrándole tener que buscar la etiqueta del precio.



Dimensiones (Al x An x Fd)

A Paquete XL 130 x 96 x 48 mm	D Blister MH 75 x 56 x 28 mm
B Paquete L 95 x 65 x 47 mm	E Blister L 125 x 56 x 20 mm
C Paquete S 95 x 65 x 24 mm	F Blister M 75 x 56 x 14 mm
	G Blister S 75 x 40 x 20 mm



Especial

Bicromatado

Cabeza redonda

Galvanizado

Inoxidable



Cabeza gota sebo

SIMPLEMENTE EL MEJOR

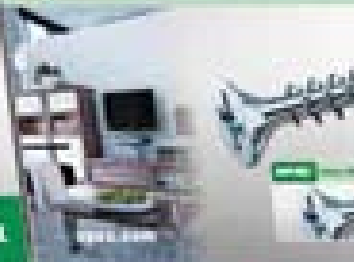
SPAX®

SIMPLEMENTE EL M



BICROMATADO
- Cabeza plana,
cabeza en cruz 2
líneas,
inclinación
100°

MULTI-MATERIAL



MEJOR



SIMPLEMENTE EL MEJOR

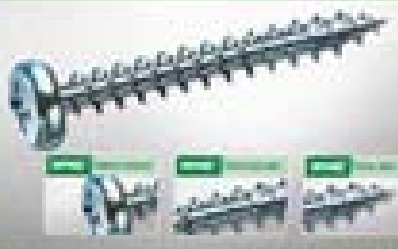
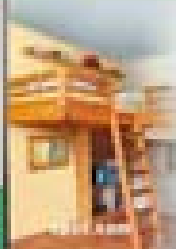


SIMPLE

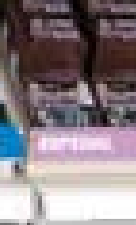
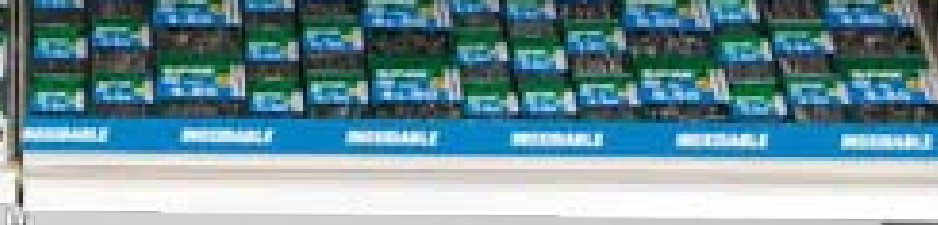
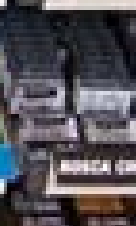
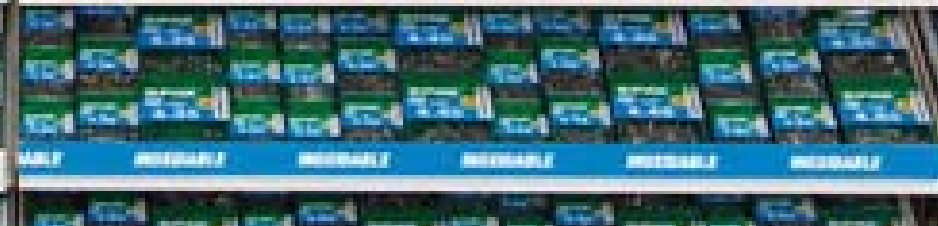
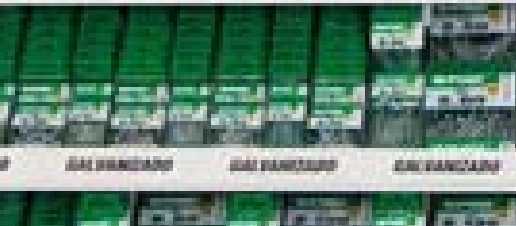
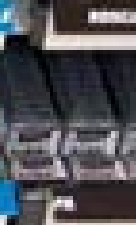
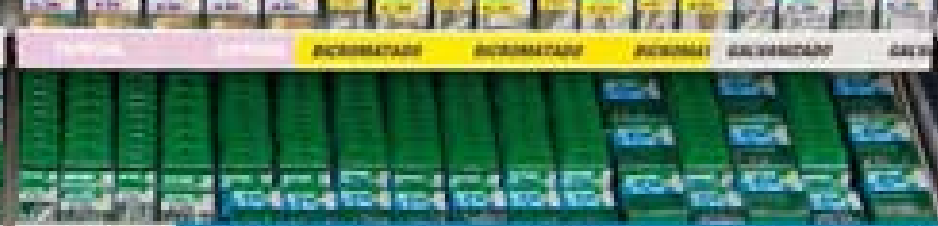
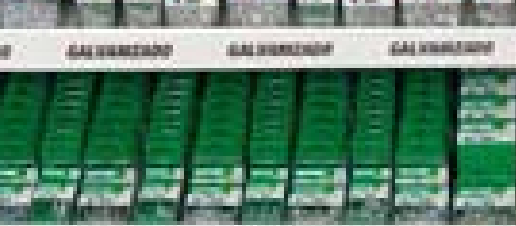
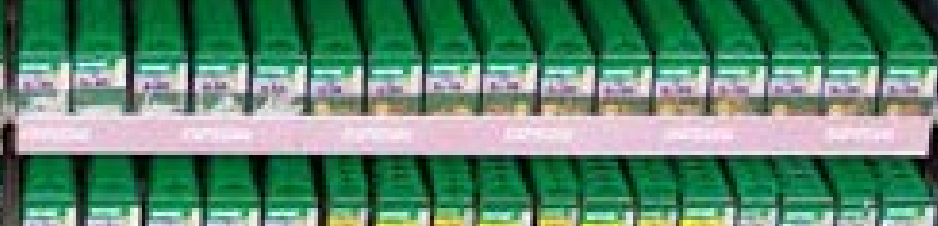
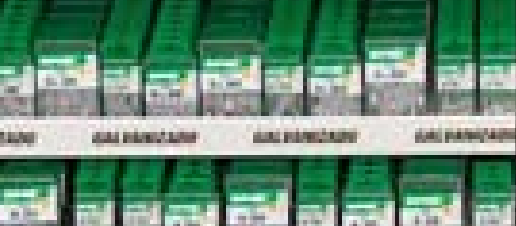
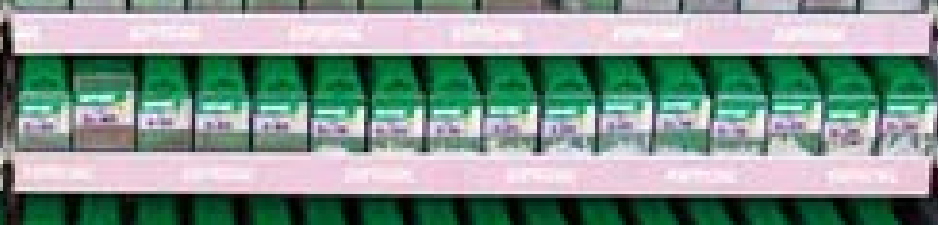
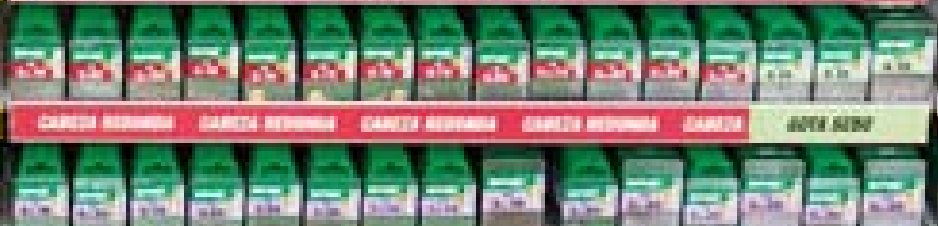
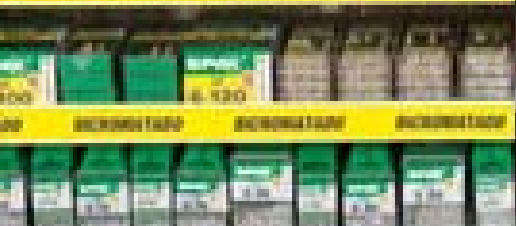


ALICATORIO
+ Cabeza plana, permite un paso 2
templado, reduciendo el
consumo

MULTI-MATERIAL



ALICATORIO
+ Cabeza redonda, permite un paso 2
templado, reduciendo el
consumo



MENTE EL MEJOR

SPAX



ESPECIAL

- 100
- Aluminio
- Inoxidable
- Acero
- Acero chapado
- Excelente resistencia en punto



spax.com

Bicromatado





Bicromatado



Cabeza plana, ranura en cruz Z templado, revestimiento sintético

S

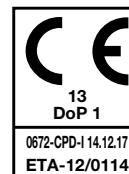
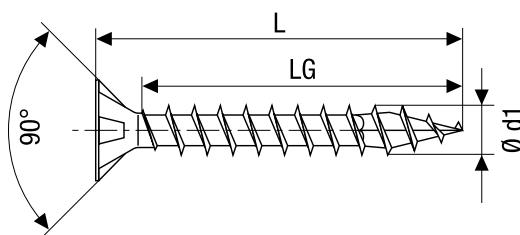


40 mm

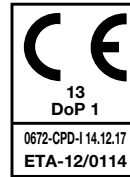
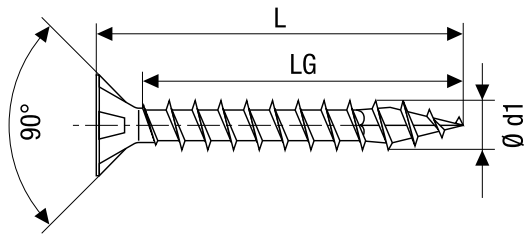
MH



56 mm



Medidas					Código EAN	N.º de SPAX
Ø rosca [mm]	Longitud [mm]	Cantidad [envase]	Modelo	Familia		
2,0 x	10	50	Blister S	B	4003530171444	7081020200101
	12	50	Blister S	B	4003530171451	7081020200121
	16	50	Blister S	B	4003530171468	7081020200161
2,5 x	10	45	Blister S	B	4003530171475	7081020250101
	10	150	Blister MH	C	4003530172441	7081020250102
	12	45	Blister S	B	4003530171482	7081020250121
	12	120	Blister MH	C	4003530172458	7081020250122
	16	45	Blister S	B	4003530171499	7081020250161
	16	120	Blister MH	C	4003530172465	7081020250162
	20	45	Blister S	B	4003530171505	7081020250201
	20	120	Blister MH	C	4003530172472	7081020250202
	3,0 x	12	40	Blister S	B	4003530171512
12		100	Blister MH	C	4003530172489	7081020300122
16		40	Blister S	B	4003530171529	7081020300161
16		100	Blister MH	C	4003530172496	7081020300162
16		235	Paquete L	E	4003530173318	7081020300163
20		25	Blister S	A	4003530171536	7081020300201
20		100	Blister MH	C	4003530172502	7081020300202
20		215	Paquete L	E	4003530173325	7081020300203
25		25	Blister S	A	4003530171543	7081020300251
25		100	Blister MH	C	4003530172519	7081020300252
25		180	Paquete L	E	4003530173332	7081020300253
30		25	Blister S	B	4003530171550	7081020300301
30		80	Blister MH	C	4003530172526	7081020300302
30		170	Paquete L	E	4003530173349	7081020300303
3,5 x		35	15	Blister S	A	4003530171567
	35	70	Blister MH	C	4003530172533	7081020300352
	35	150	Paquete L	E	4003530173356	7081020300353
	40	15	Blister S	A	4003530171574	7081020300401
	40	50	Blister MH	C	4003530172540	7081020300402
	40	140	Paquete L	E	4003530173363	7081020300403
	12	30	Blister S	B	4003530171581	7081020350121
	12	100	Blister MH	C	4003530172557	7081020350122
	16	25	Blister S	B	4003530171598	7081020350161
	16	90	Blister MH	C	4003530172564	7081020350162
	16	200	Paquete L	E	4003530173370	7081020350163
	20	20	Blister S	A	4003530171604	7081020350201
20	90	Blister MH	C	4003530172571	7081020350202	
20	180	Paquete L	E	4003530173387	7081020350203	



Medidas					Código EAN	N.º de SPAX
Ø rosca [mm]	Longitud [mm]	Cantidad [envase]	Modelo	Familia		
3,5 x	25	20	Blister S	A	—	4003530171611 7081020350251
	25	90	Blister MH	C	—	4003530172588 7081020350252
	25	160	Paquete L	E	—	4003530173394 7081020350253
	25	400	Paquete XL	F	—	4003530173745 7081020350254
	30	20	Blister S	A	—	4003530171628 7081020350301
	30	90	Blister MH	C	—	4003530172595 7081020350302
	30	140	Paquete L	E	—	4003530173400 7081020350303
	30	350	Paquete XL	F	—	4003530173752 7081020350304
	35	15	Blister S	A	—	4003530171635 7081020350351
	35	60	Blister MH	C	—	4003530172601 7081020350352
	35	130	Paquete L	E	—	4003530173417 7081020350353
	35	290	Paquete XL	F	—	4003530173769 7081020350354
	40	15	Blister S	A	—	4003530171642 7081020350401
	40	60	Blister MH	C	—	4003530172618 7081020350402
	40	120	Paquete L	E	—	4003530173424 7081020350403
	40	275	Paquete XL	F	—	4003530173776 7081020350404
	50	10	Blister S	A	—	4003530171659 7081020350501
	50	30	Blister MH	C	—	4003530172625 7081020350502
50	110	Paquete L	E	—	4003530173431 7081020350503	
50	240	Paquete XL	F	—	4003530173783 7081020350504	
4,0 x	16	25	Blister S	B	—	4003530171666 7081020400161
	16	80	Blister MH	C	—	4003530172632 7081020400162
	16	165	Paquete L	E	—	4003530173448 7081020400163
	20	20	Blister S	A	—	4003530171673 7081020400201
	20	80	Blister MH	C	—	4003530172649 7081020400202
	20	150	Paquete L	E	—	4003530173455 7081020400203
	25	15	Blister S	A	—	4003530171680 7081020400251
	25	60	Blister MH	C	—	4003530172656 7081020400252
	25	135	Paquete L	E	—	4003530173462 7081020400253
	30	15	Blister S	A	—	4003530171697 7081020400301
	30	60	Blister MH	C	—	4003530172663 7081020400302
	30	125	Paquete L	E	—	4003530173479 7081020400303
	30	290	Paquete XL	F	—	4003530173790 7081020400304
	35	12	Blister S	A	—	4003530171703 7081020400351
	35	50	Blister MH	C	—	4003530172670 7081020400352
	35	105	Paquete L	E	—	4003530173486 7081020400353
	35	240	Paquete XL	F	—	4003530173806 7081020400354



56 mm



65 mm

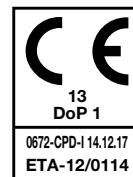
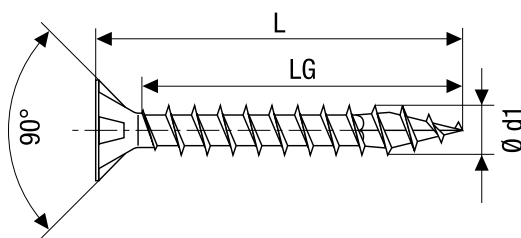


96 mm

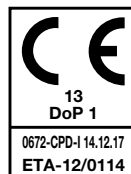
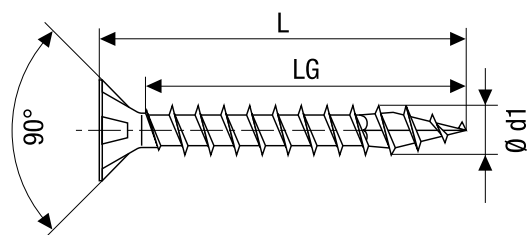
Bicromatado



Cabeza plana, ranura en cruz Z templado, revestimiento sintético



Medidas					Código EAN	N.º de SPAX
Ø rosca [mm]	Longitud [mm]	Cantidad [envase]	Modelo	Familia		
4,0 x	40	12	Blister S	A	4003530171710	7081020400401
	40	50	Blister MH	C	4003530172687	7081020400402
	40	100	Paquete L	E	4003530173493	7081020400403
	40	230	Paquete XL	F	4003530173813	7081020400404
	45	12	Blister S	A	4003530171727	7081020400451
	45	40	Blister MH	C	4003530172694	7081020400452
	45	85	Paquete L	E	4003530173509	7081020400453
	45	200	Paquete XL	F	4003530173820	7081020400454
	50	12	Blister S	A	4003530171734	7081020400501
	50	40	Blister MH	C	4003530172700	7081020400502
	50	80	Paquete L	E	4003530173516	7081020400503
	50	200	Paquete XL	F	4003530173837	7081020400504
	60	6	Blister S	B	4003530171741	7081020400601
	60	20	Blister MH	C	4003530172717	7081020400602
	60	75	Paquete L	E	4003530173523	7081020400603
4,5 x	70	6	Blister S	B	4003530171758	7081020400701
	70	16	Blister MH	C	4003530172724	7081020400702
	25	15	Blister S	A	4003530171765	7081020450251
	25	50	Blister MH	C	4003530172731	7081020450252
	30	12	Blister S	A	4003530171772	7081020450301
	30	50	Blister MH	C	4003530172748	7081020450302
	30	120	Paquete L	E	4003530173530	7081020450303
	35	12	Blister S	A	4003530171789	7081020450351
	35	40	Blister MH	C	4003530172755	7081020450352
	35	110	Paquete L	E	4003530173547	7081020450353
	40	12	Blister S	A	4003530171796	7081020450401
	40	40	Blister MH	C	4003530172762	7081020450402
	40	80	Paquete L	E	4003530173554	7081020450403
	40	200	Paquete XL	F	4003530173844	7081020450404
	45	10	Blister S	A	4003530171802	7081020450451
45	30	Blister MH	C	4003530172779	7081020450452	
45	70	Paquete L	E	4003530173561	7081020450453	
50	10	Blister S	A	4003530171819	7081020450501	
50	30	Blister MH	C	4003530172786	7081020450502	
50	65	Paquete L	E	4003530173578	7081020450503	
50	150	Paquete XL	F	4003530173851	7081020450504	
60	8	Blister S	B	4003530171826	7081020450601	
60	20	Blister MH	C	4003530172793	7081020450602	
60	65	Paquete L	E	4003530173585	7081020450603	



Medidas					Código EAN	N.º de SPAX
Ø rosca [mm]	Longitud [mm]	Cantidad [envase]	Modelo	Familia		
4,5 x	70	6	Blister S	B	4003530171833	7081020450701
	70	16	Blister MH	C	4003530172809	7081020450702
	70	55	Paquete L	E	4003530173592	7081020450703
	80	12	Blister L	D	4003530172991	7081020450802
5,0 x	20	10	Blister S	A	4003530171840	7081020500201
	20	40	Blister MH	C	4003530172816	7081020500202
	25	10	Blister S	A	4003530171857	7081020500251
	25	40	Blister MH	C	4003530172823	7081020500252
	30	10	Blister S	A	4003530171864	7081020500301
	30	30	Blister MH	C	4003530172830	7081020500302
	30	80	Paquete L	E	4003530173608	7081020500303
	35	10	Blister S	A	4003530171871	7081020500351
	35	30	Blister MH	C	4003530172847	7081020500352
	35	75	Paquete L	E	4003530173615	7081020500353
	40	10	Blister S	A	4003530171888	7081020500401
	40	30	Blister MH	C	4003530172854	7081020500402
	40	70	Paquete L	E	4003530173622	7081020500403
	45	8	Blister S	B	4003530171895	7081020500451
	45	20	Blister MH	C	4003530172861	7081020500452
	45	60	Paquete L	E	4003530173639	7081020500453
	50	8	Blister S	B	4003530171901	7081020500501
	50	20	Blister MH	C	4003530172878	7081020500502
	50	55	Paquete L	E	4003530173646	7081020500503
	50	125	Paquete XL	F	4003530173868	7081020500504
	60	8	Blister S	B	4003530171918	7081020500601
60	20	Blister MH	C	4003530172885	7081020500602	
60	50	Paquete L	E	4003530173653	7081020500603	
70	6	Blister S	B	4003530171925	7081020500701	
70	16	Blister MH	C	4003530172892	7081020500702	
70	40	Paquete L	E	4003530173660	7081020500703	
80	12	Blister L	D	4003530173004	7081020500802	
80	35	Paquete L	E	4003530173677	7081020500803	
90	10	Blister L	D	4003530173011	7081020500902	
90	35	Paquete L	E	4003530173684	7081020500903	
100	10	Blister L	D	4003530173028	7081020501002	
100	60	Paquete XXL	G	4003530173929	7081020501004	



65 mm



96 mm

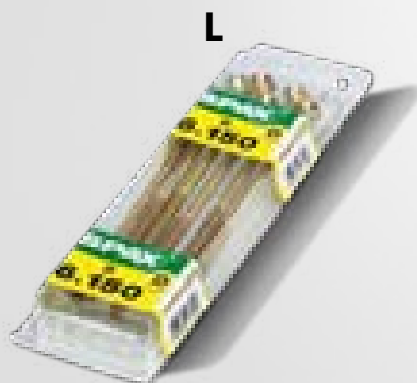


96 mm

Bicromatado



Cabeza plana, ranura en cruz Z templado, revestimiento sintético

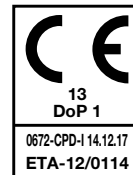
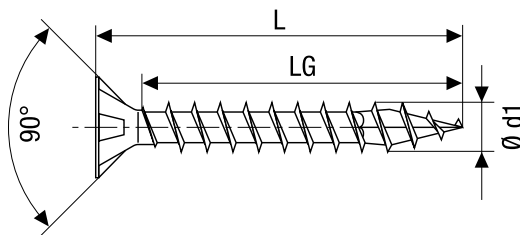


56 mm

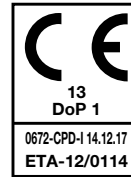
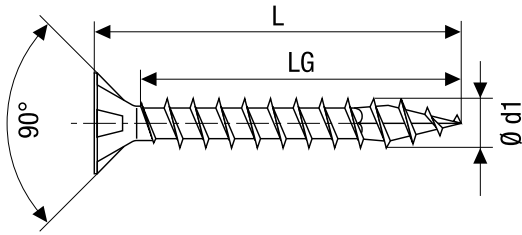
XXL



96 mm



Medidas					Código EAN	N.º de SPAX
Ø rosca [mm]	Longitud [mm]	Cantidad [envase]	Modelo	Familia		
6,0 x	50	6	Blister S	B	4003530171932	7081020600501
	50	16	Blister MH	C	4003530172908	7081020600502
	50	40	Paquete L	E	4003530173691	7081020600503
	60	6	Blister S	B	4003530171949	7081020600601
	60	16	Blister MH	C	4003530172915	7081020600602
	60	35	Paquete L	E	4003530173707	7081020600603
	70	6	Blister S	B	4003530171956	7081020600701
	70	16	Blister MH	C	4003530172922	7081020600702
	70	30	Paquete L	E	4003530173714	7081020600703
	80	10	Blister L	D	4003530173035	7081020600802
	80	25	Paquete L	E	4003530173721	7081020600803
	90	10	Blister L	D	4003530173042	7081020600902
	90	25	Paquete L	E	4003530173738	7081020600903
	100	10	Blister L	D	4003530173059	7081020601002
	100	50	Paquete XXL	G	4003530173936	7081020601004
	120	6	Blister L	D	4003530173066	7081020601202
	120	35	Paquete XXL	G	4003530173943	7081020601204
	130	6	Blister L	D	4003530173073	7081020601302
140	6	Blister L	D	4003530173080	7081020601402	
150	6	Blister L	D	4003530173097	7081020601502	
160	6	Blister L	D	4003530173103	7081020601602	



Medidas					Código EAN	N.º de SPAX
Ø rosca [mm]	Longitud [mm]	Cantidad [envase]	Modelo	Familia		
3,5 x	35	8	Blister S	A	4003530174469	7041020350351
	35	20	Blister MH	C	4003530174544	7041020350352
4,5 x	45	6	Blister S	A	4003530174476	7041020450451
	45	16	Blister MH	C	4003530174551	7041020450452
5,0 x	50	4	Blister S	A	4003530174483	7041020500501
	50	10	Blister MH	C	4003530174568	7041020500502
6,0 x	50	3	Blister S	A	4003530174490	7041020600501
	50	8	Blister MH	C	4003530174575	7041020600502

S



40 mm

MH



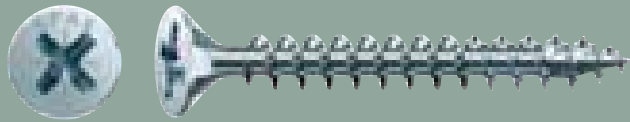
56 mm

Galvanizado

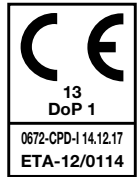
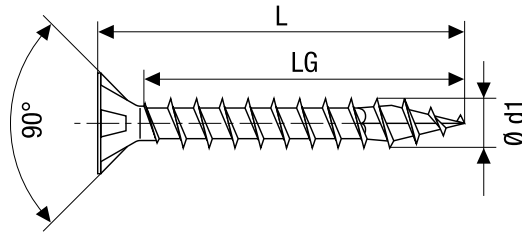




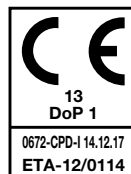
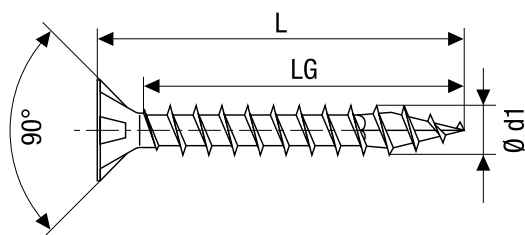
Galvanizado



Cabeza plana, ranura en cruz Z templado, revestimiento sintético



Medidas					Código EAN	N.º de SPAX
Ø rosca [mm]	Longitud [mm]	Cantidad [envase]	Modelo	Familia		
2,5 x	10	45	Blister S	B	4003530170966	7081010250101
	10	150	Blister MH	C	4003530171963	7081010250102
	12	45	Blister S	B	4003530170973	7081010250121
	12	120	Blister MH	C	4003530171970	7081010250122
	16	45	Blister S	B	4003530170980	7081010250161
	16	120	Blister MH	C	4003530171987	7081010250162
	20	45	Blister S	B	4003530170997	7081010250201
	20	120	Blister MH	C	4003530171994	7081010250202
	3,0 x	12	40	Blister S	B	4003530171000
12		100	Blister MH	C	4003530172007	7081010300122
16		40	Blister S	B	4003530171017	7081010300161
16		100	Blister MH	C	4003530172014	7081010300162
16		235	Paquete L	E	4003530173110	7081010300163
20		25	Blister S	A	4003530171024	7081010300201
20		100	Blister MH	C	4003530172021	7081010300202
20		215	Paquete L	E	4003530173127	7081010300203
25		25	Blister S	A	4003530171031	7081010300251
25		100	Blister MH	C	4003530172038	7081010300252
30		20	Blister S	A	4003530171048	7081010300301
30		80	Blister MH	C	4003530172045	7081010300302
35		15	Blister S	A	4003530171055	7081010300351
35		60	Blister MH	C	4003530172052	7081010300352
40		15	Blister S	A	4003530171062	7081010300401
40	50	Blister MH	C	4003530172069	7081010300402	
3,5 x	12	30	Blister S	B	4003530171079	7081010350121
	12	100	Blister MH	C	4003530172076	7081010350122
	16	25	Blister S	B	4003530171086	7081010350161
	16	90	Blister MH	C	4003530172083	7081010350162
	16	200	Paquete L	E	4003530173134	7081010350163
	20	20	Blister S	A	4003530171093	7081010350201
	20	90	Blister MH	C	4003530172090	7081010350202
	20	180	Paquete L	E	4003530173141	7081010350203
	25	20	Blister S	A	4003530171109	7081010350251
	25	80	Blister MH	C	4003530172106	7081010350252
	25	160	Paquete L	E	4003530173158	7081010350253
	30	20	Blister S	A	4003530171116	7081010350301
30	80	Blister MH	C	4003530172113	7081010350302	
30	140	Paquete L	E	4003530173165	7081010350303	



Medidas					Código EAN	N.º de SPAX
Ø rosca [mm]	Longitud [mm]	Cantidad [envase]	Modelo	Familia		
3,5 x	35	15	Blister S	A	—	4003530171123 7081010350351
	35	60	Blister MH	C	—	4003530172120 7081010350352
	35	130	Paquete L	E	—	4003530173172 7081010350353
	40	15	Blister S	A	—	4003530171130 7081010350401
	40	60	Blister MH	C	—	4003530172137 7081010350402
	40	120	Paquete L	E	—	4003530173189 7081010350403
	50	10	Blister S	A	—	4003530171147 7081010350501
	50	30	Blister MH	C	—	4003530172144 7081010350502
	50	110	Paquete L	E	—	4003530173196 7081010350503
4,0 x	16	25	Blister S	B	—	4003530171154 7081010400161
	16	80	Blister MH	C	—	4003530172151 7081010400162
	16	165	Paquete L	E	—	4003530173202 7081010400163
	20	20	Blister S	A	—	4003530171161 7081010400201
	20	80	Blister MH	C	—	4003530172168 7081010400202
	20	150	Paquete L	E	—	4003530173219 7081010400203
	25	15	Blister S	A	—	4003530171178 7081010400251
	25	60	Blister MH	C	—	4003530172175 7081010400252
	25	135	Paquete L	E	—	4003530173226 7081010400253
	30	15	Blister S	A	—	4003530171185 7081010400301
	30	60	Blister MH	C	—	4003530172182 7081010400302
	30	125	Paquete L	E	—	4003530173233 7081010400303
	35	10	Blister S	A	—	4003530171192 7081010400351
	35	50	Blister MH	C	—	4003530172199 7081010400352
	35	105	Paquete L	E	—	4003530173240 7081010400353
	40	10	Blister S	A	—	4003530171208 7081010400401
	40	50	Blister MH	C	—	4003530172205 7081010400402
	40	100	Paquete L	E	—	4003530173257 7081010400403
	50	10	Blister S	A	—	4003530171215 7081010400501
	50	30	Blister MH	C	—	4003530172212 7081010400502
	50	80	Paquete L	E	—	4003530173264 7081010400503
60	6	Blister S	B	—	4003530171222 7081010400601	
60	20	Blister MH	C	—	4003530172229 7081010400602	
70	6	Blister S	B	—	4003530171239 7081010400701	
70	16	Blister MH	C	—	4003530172236 7081010400702	

S



40 mm

MH



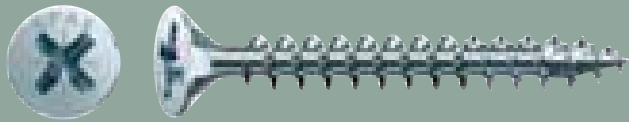
56 mm

L

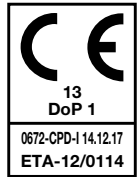
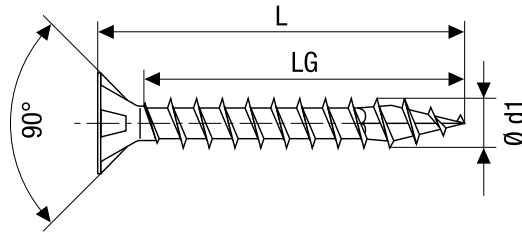


65 mm

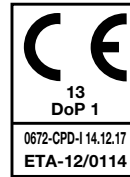
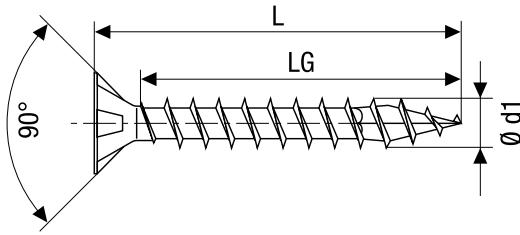
Galvanizado



Cabeza plana, ranura en cruz Z templado, revestimiento sintético



Medidas					Código EAN	N.º de SPAX	
Ø rosca [mm]	Longitud [mm]	Cantidad [envase]	Modelo	Familia			
4,5 x	25	15	Blister S	A	4003530171246	7081010450251	
	25	50	Blister MH	C	4003530172243	7081010450252	
	30	10	Blister S	A	4003530171253	7081010450301	
	30	40	Blister MH	C	4003530172250	7081010450302	
	35	10	Blister S	A	4003530171260	7081010450351	
	35	40	Blister MH	C	4003530172267	7081010450352	
	35	110	Paquete L	E	4003530173271	7081010450353	
	40	10	Blister S	A	4003530171277	7081010450401	
	40	40	Blister MH	C	4003530172274	7081010450402	
	40	80	Paquete L	E	4003530173288	7081010450403	
	45	10	Blister S	A	4003530171284	7081010450451	
	45	30	Blister MH	C	4003530172281	7081010450452	
	45	70	Paquete L	E	4003530173295	7081010450453	
	50	10	Blister S	A	4003530171291	7081010450501	
	50	30	Blister MH	C	4003530172298	7081010450502	
	50	65	Paquete L	E	4003530173301	7081010450503	
	5,0 x	60	8	Blister S	B	4003530171307	7081010450601
		60	20	Blister MH	C	4003530172304	7081010450602
70		6	Blister S	B	4003530171314	7081010450701	
70		16	Blister MH	C	4003530172311	7081010450702	
80		12	Blister L	D	4003530172939	7081010450802	
20		10	Blister S	A	4003530171321	7081010500201	
20		40	Blister MH	C	4003530172328	7081010500202	
25		10	Blister S	A	4003530171338	7081010500251	
25		40	Blister MH	C	4003530172335	7081010500252	
30		10	Blister S	A	4003530171345	7081010500301	
30		30	Blister MH	C	4003530172342	7081010500302	
35		10	Blister S	A	4003530171352	7081010500351	
35		30	Blister MH	C	4003530172359	7081010500352	
40		10	Blister S	A	4003530171369	7081010500401	
40		30	Blister MH	C	4003530172366	7081010500402	
45		8	Blister S	B	4003530171376	7081010500451	
45		20	Blister MH	C	4003530172373	7081010500452	
50		8	Blister S	B	4003530171383	7081010500501	
50	20	Blister MH	C	4003530172380	7081010500502		
60	8	Blister S	B	4003530171390	7081010500601		
60	20	Blister MH	C	4003530172397	7081010500602		
70	6	Blister S	B	4003530171406	7081010500701		
70	16	Blister MH	C	4003530172403	7081010500702		



Medidas					Código EAN	N.º de SPAX
Ø rosca [mm]	Longitud [mm]	Cantidad [envase]	Modelo	Familia		
5,0 x	80	12	Blister L	D	4003530172946	7081010500802
	80	60	Paquete XXL	G	4003530173875	7081010500804
	100	10	Blister L	D	4003530172953	7081010501002
	100	60	Paquete XXL	G	4003530173882	7081010501004
6,0 x	50	6	Blister S	B	4003530171413	7081010600501
	50	16	Blister MH	C	4003530172410	7081010600502
	60	6	Blister S	B	4003530171420	7081010600601
	60	16	Blister MH	C	4003530172427	7081010600602
	70	6	Blister S	B	4003530171437	7081010600701
	70	16	Blister MH	C	4003530172434	7081010600702
	80	10	Blister L	D	4003530172960	7081010600802
	80	50	Paquete XXL	G	4003530173899	7081010600804
	100	10	Blister L	D	4003530172977	7081010601002
	100	50	Paquete XXL	G	4003530173905	7081010601004
	120	6	Blister L	D	4003530172984	7081010601202
	120	35	Paquete XXL	G	4003530173912	7081010601204



3,5 x	35	8	Blister S	A	4003530174421	7041010350351
	35	20	Blister MH	C	4003530174506	7041010350352
4,5 x	45	6	Blister S	A	4003530174438	7041010450451
	45	16	Blister MH	C	4003530174513	7041010450452
5,0 x	50	4	Blister S	A	4003530174445	7041010500501
	50	10	Blister MH	C	4003530174520	7041010500502
6,0 x	50	3	Blister S	A	4003530174452	7041010600501
	50	8	Blister MH	C	4003530174537	7041010600502



56 mm



96 mm



40 mm



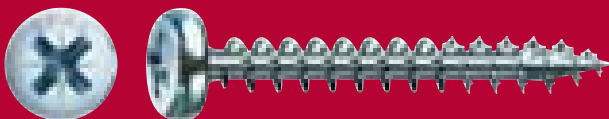
56 mm

Cabeza redonda





Cabeza redonda



Cabeza redonda, ranura en cruz Z templado, revestimiento sintético

M

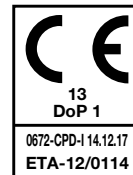
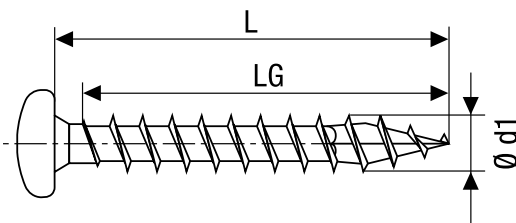


56 mm

M



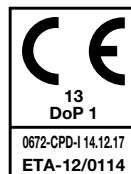
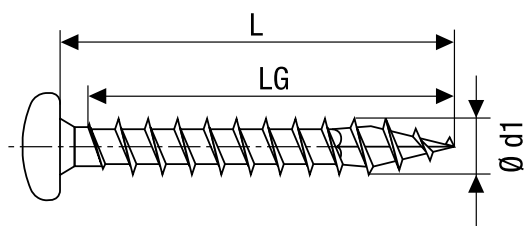
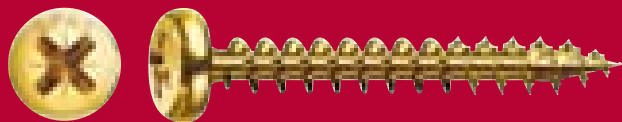
56 mm



Medidas					Código EAN	N.º de SPAX
Ø rosca [mm]	Longitud [mm]	Cantidad [envase]	Modelo	Familia		
3,5 x	16	20	Blister M	B	4003530174582	7231010350162
	20	20	Blister M	B	4003530174599	7231010350202
	25	15	Blister M	B	4003530174605	7231010350252
4,0 x	16	15	Blister M	B	4003530174612	7231010400162
	20	15	Blister M	B	4003530174629	7231010400202
	25	15	Blister M	B	4003530174636	7231010400252
	30	10	Blister M	B	4003530174643	7231010400302
5,0 x	16	10	Blister M	B	4003530174650	7231010500162
	20	10	Blister M	B	4003530174667	7231010500202
	30	10	Blister M	B	4003530174674	7231010500302



3,0 x	16	20	Blister M	B	4003530192609	7231320300162
	20	15	Blister M	B	4003530192616	7231320300202
3,5 x	16	20	Blister M	B	4003530192623	7231320350162
	20	15	Blister M	B	4003530192630	7231320350202
	25	15	Blister M	B	4003530192647	7231320350252
	30	15	Blister M	B	4003530192654	7231320350302

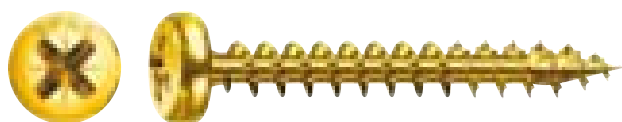


Medidas					Código EAN	N.º de SPAX
Ø rosca [mm]	Longitud [mm]	Cantidad [envase]	Modelo	Familia		
3,0 x	16	20	Blister M	B	–	4003530174681 7231020300162
3,5 x	16	20	Blister M	B	–	4003530174704 7231020350162
	25	15	Blister M	B	–	4003530174711 7231020350252



M

56 mm



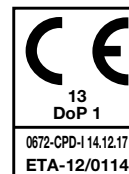
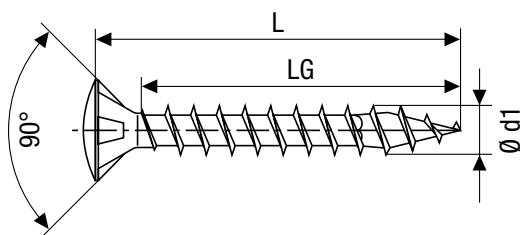
2,0 x	12	30	Blister M	B	–	4003530174759 7231060200122
	16	30	Blister M	B	–	4003530174766 7231060200162

Cabeza gota de sebo



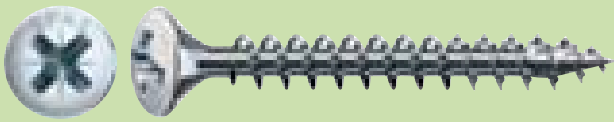


Cabeza gota de sebo



Medidas					Código EAN	N.º de SPAX
Ø rosca [mm]	Longitud [mm]	Cantidad [envase]	Modelo	Familia		
4,0 x	16	25	Blister M	B	—	4003530174773 7241030400162
	16	130	Paquete L	E	—	4003530174780 7241030400163

Cabeza gota de sebo,
ranura en cruz Z
templado, revestimiento sintético



SPAX[®]

M



56 mm

L

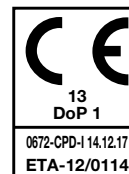
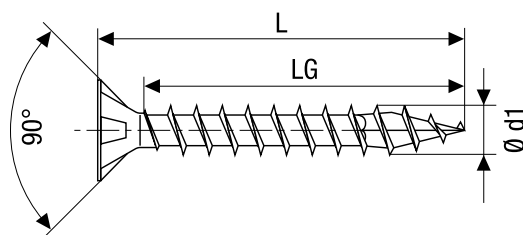
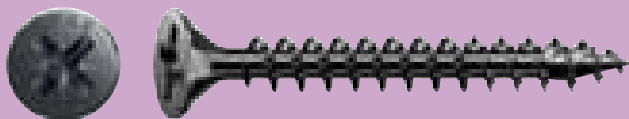


65 mm





Especial



Cabeza plana, ranura en cruz Z templado, revestimiento sintético

M



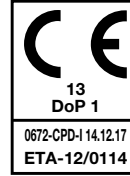
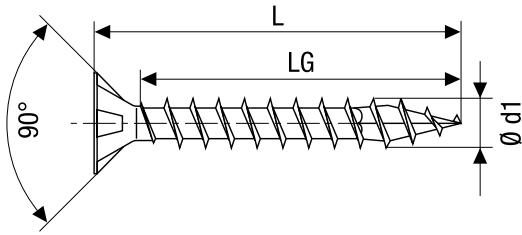
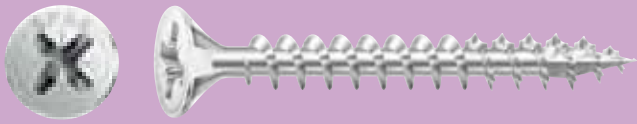
56 mm

L

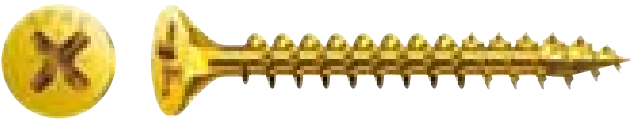


65 mm

Medidas					Código EAN	N.º de SPAX
Ø rosca [mm]	Longitud [mm]	Cantidad [envase]	Modelo	Familia		
2,5 x	16	25	Blister M	B	4003530174797	7081320250162
3,0 x	16	20	Blister M	B	4003530174810	7081320300162
	20	20	Blister M	B	4003530174827	7081320300202
3,5 x	16	15	Blister M	B	4003530174858	7081320350162
	16	200	Paquete L	E	4003530174926	7081320350163
	20	15	Blister M	B	4003530174865	7081320350202
	20	185	Paquete L	E	4003530174933	7081320350203
	25	15	Blister M	B	4003530174872	7081320350252
	25	160	Paquete L	E	4003530174940	7081320350253
	30	15	Blister M	C	4003530174889	7081320350302
	30	150	Paquete L		4003530174957	7081320350303
4,0 x	40	10	Blister M	B	4003530174896	7081320350402
	40	125	Paquete L	E	4003530174964	7081320350403
	30	10	Blister M	B	4003530174902	7081320400302
	40	6	Blister M	B	4003530174919	7081320400402



Medidas						Código EAN	N.º de SPAX
Ø rosca [mm]	Longitud [mm]	Cantidad [envase]	Modelo	Familia			
3,0 x	16	20	Blister M	B	–	4003530174995	7081310300162
		20	Blister M	B	–	4003530175008	7081310300202
3,5 x	16	15	Blister M	B	–	4003530175039	7081310350162



3,0 x	20	25	Blister M	B	–	4003530175107	7081060300202	
3,5 x	16	20	Blister M	B	–	4003530175114	7081060350162	
		20	Blister M	B	–	4003530175121	7081060350202	
		25	20	Blister M	B	–	4003530175138	7081060350252
		30	10	Blister M	B	–	4003530175145	7081060350302
		35	10	Blister M	B	–	4003530175152	7081060350352
4,0 x	40	10	Blister M	B	–	4003530175176	7081060400402	

M



56 mm

M

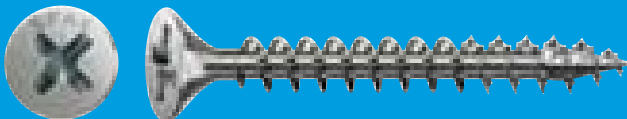


56 mm

Inoxidable



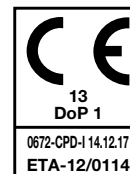
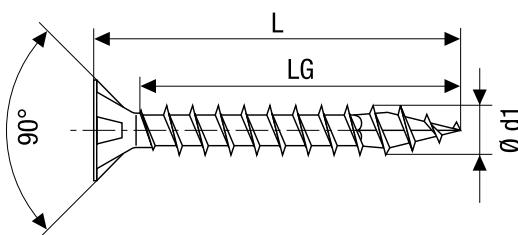




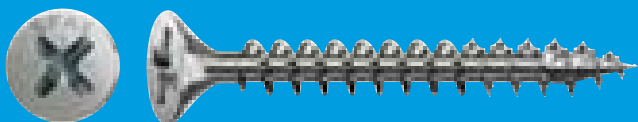
INOX
STAINLESS STEEL



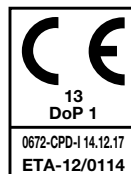
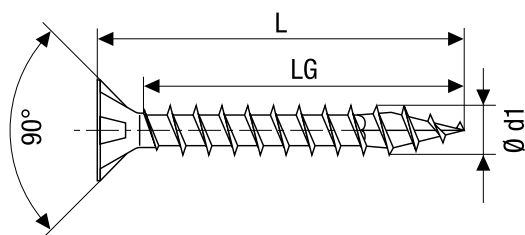
Cabeza plana, ranura en cruz Z
templado, revestimiento sintético



Medidas					Código EAN	N.º de SPAX
Ø rosca [mm]	Longitud [mm]	Cantidad [envase]	Modelo	Familia		
3,0 x	16	30	Blister M	H	4003530173950	7087000300162
	20	30	Blister M	H	4003530173967	7087000300202
	25	25	Blister M	H	4003530173974	7087000300252
	30	25	Blister M	H	4003530173981	7087000300302
	35	25	Blister M	H	4003530173998	7087000300352
3,5 x	16	25	Blister M	H	4003530174001	7087000350162
	16	50	Paquete S	I	4003530174155	7087000350163
	20	25	Blister M	H	4003530174018	7087000350202
	20	50	Paquete S	I	4003530174162	7087000350203
	25	25	Blister M	H	4003530174025	7087000350252
	25	50	Paquete S	I	4003530174179	7087000350253
	30	25	Blister M	H	4003530174032	7087000350302
	30	50	Paquete S	I	4003530174186	7087000350303
	30	200	Paquete XL	J	4003530174308	7087000350304
	35	20	Blister M	H	4003530174049	7087000350352
	35	40	Paquete S	I	4003530174193	7087000350353
	35	180	Paquete XL	J	4003530174315	7087000350354
	40	20	Blister M	H	4003530174056	7087000350402
	40	40	Paquete S	I	4003530174209	7087000350403
	40	160	Paquete XL	J	4003530174322	7087000350404
4,0 x	30	20	Blister M	H	4003530174063	7087000400302
	30	40	Paquete S	I	4003530174216	7087000400303
	30	160	Paquete XL	J	4003530174339	7087000400304
	35	20	Blister M	H	4003530174070	7087000400352
	35	40	Paquete S	I	4003530174223	7087000400353
	35	150	Paquete XL	J	4003530174346	7087000400354
	40	18	Blister M	H	4003530174087	7087000400402
	40	36	Paquete S	I	4003530174230	7087000400403
	40	140	Paquete XL	J	4003530174353	7087000400404
	45	18	Blister M	H	4003530174094	7087000400452
	45	36	Paquete S	I	4003530174247	7087000400453
	45	140	Paquete XL	J	4003530174360	7087000400454
	50	18	Blister M	H	4003530174100	7087000400502
	50	36	Paquete S	I	4003530174254	7087000400503
	50	120	Paquete XL	J	4003530174377	7087000400504
60	15	Blister M	H	4003530174117	7087000400602	
60	30	Paquete S	I	4003530174261	7087000400603	
60	100	Paquete XL	J	4003530174384	7087000400604	



SPAX®



Medidas						Código EAN	N.º de SPAX
Ø rosca [mm]	Longitud [mm]	Cantidad [envase]	Modelo	Familia			
4,5 x	50	15	Blister M	H	—	4003530174124	7087000450502
	50	30	Paquete S	I	—	4003530174278	7087000450503
	50	100	Paquete XL	J	—	4003530174391	7087000450504
5,0 x	50	12	Blister M	H	—	4003530174131	7087000500502
	50	25	Paquete S	I	—	4003530174285	7087000500503
	50	90	Paquete XL	J	—	4003530174407	7087000500504
	60	12	Blister M	H	—	4003530174148	7087000500602
	60	25	Paquete S	I	—	4003530174292	7087000500603
	60	80	Paquete XL	J	—	4003530174414	7087000500604



56 mm



65 mm



96 mm

spax.com

Terrazas, postes y vallas







INOX
STAINLESS STEEL

L



66 mm

XL

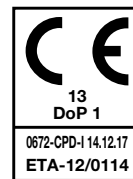
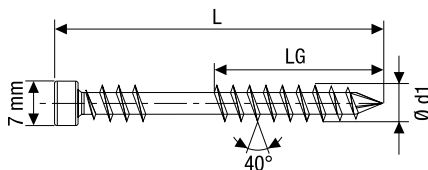


88 mm

HKB S

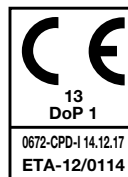
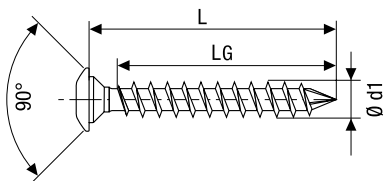
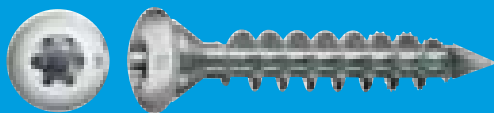


155 mm



Medidas				Código EAN	N.º de SPAX
Ø rosca [mm]	Longitud [mm]	Cantidad [envase]	Modelo		
5,0 x	40	125	XL	4003530190049	4507000500406
	50	150	XL	4003530191060	4507000500506
	50	60	L	4003530191053	4507000500507
	50	230	HKB S	4003530191077	4507000500509
	60	125	XL	4003530191091	4507000500606
	60	50	L	4003530191084	4507000500607
	60	200	HKB S	4003530190490	4507000500609
	70	100	XL	4003530190056	4507000500706
	80	75	XL	4003530190063	4507000500806

SPAX Terrazas –
Cabeza cilíndrica, T-STAR plus
hilo de sujeción, inoxidable



Medidas				Código EAN	N.º de SPAX
Ø rosca [mm]	Longitud [mm]	Cantidad [envase]	Modelo		
8,0 x	50	25	Lp	4003530111914	4357189800504



Medidas				Precio en €	Código EAN	N.º de SPAX
Ø rosca [mm]	Longitud [mm]	Cantidad [envase]	Modelo			
7,0 x	35	12 set	Lp	-	4003530073809	4357700700354

Lp



65 mm

SPAX tornillo poste INOX

Lp



65 mm

SPAX conector de vallas INOX

Construcción de madera

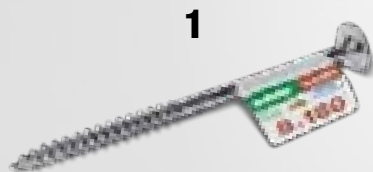




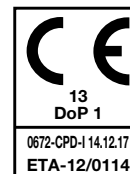
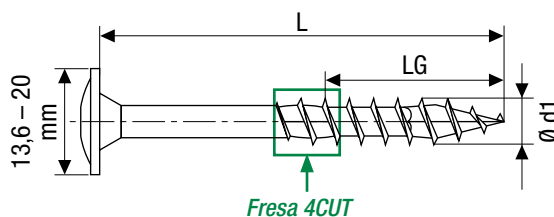
HI.FORCE



56 mm



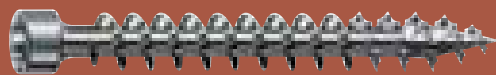
180 mm



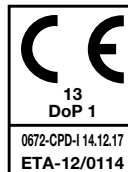
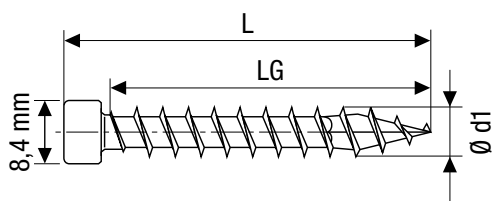
Medidas				Código EAN	N.º de SPAX
Ø rosca [mm]	Longitud [mm]	Cantidad [envase]	Modelo		
6,0 x	60	12	M	4003530193774	4251750600602
	80	10	M	4003530193798	4251750600802
	100	10	M	4003530193811	4251750601002
	120	8	M	4003530193835	4251750601202
	140	6	M	4003530193859	4251750601402
	160	6	M	4003530193873	4251750601602
	180	6	M	4003530193897	4251750601802
	8,0 x	100	1	1	4003530099311
120		1	1	4003530099328	4251750801200
140		1	1	4003530099335	4251750801400
160		1	1	4003530099342	4251750801600
180		1	1	4003530099359	4251750801800
200		1	1	4003530158971	4251750802000
220		1	1	4003530193613	4251750802200
240		1	1	4003530190407	4251750802400
	260	1	1	4003530190421	4251750802600

SPAX HI.FORCE –
Acero templado, cabeza arandela
T-STAR plus, WIROX

IN.FORCE



SPAX®



Medidas				Código EAN	N.º de SPAX
Ø rosca [mm]	Longitud [mm]	Cantidad [envase]	Modelo		
6,0 x	80	30	L	4003530194054	4211750600807
	180	20	STKL	4003530193989	4211750601807
	200	16	STKL	4003530189203	4211750602007



66 mm

STKL



75 mm

SPAX IN.FORCE –
Acero templado, cabeza cilíndrica
rosca total, T-STAR plus, WIROX

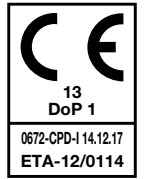
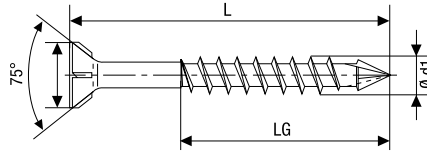
spax.com

Tornillo para MDF





SPAX-M



Medidas				Código EAN		N.º de SPAX
Ø rosca [mm]	Longitud [mm]	Cantidad [envase]	Modelo			
3,5 x	40	125	L	—	4003530111600	4441010350407
	45	125	L	—	4003530097058	4441010350457

Tornillo para MDF



SPAX[®]

L



66 mm

Programa adicional





Contenido programa adicional

DIN 7981

56–57



Rosca chapa DIN 7981 galvanizado

DIN 7982

58–59



Rosca chapa DIN 7982 galvanizado

DIN 7504-N

60–61



Rosca chapa 7504-N galvanizado

DIN 7504-P

62



Rosca chapa 7504-P galvanizado

Alcayata

63–64



Alcayata galvanizada

Alcayata galvanizada

Alcayata blanca

Alcayata + taco

Hembrilla

65–68



Hembrilla cerrada galvanizada

Hembrilla cerrada blanca

Hembrilla cerrada + taco

Hembrilla abierta

Hembrilla abierta blanca

Hembrilla abierta + taco



GIX

69

GIX, tornillo fosfatado para placa de yeso
GIX, tornillo fosfatado para placa de yeso autotaladrante



Tornillo para tirador

70

Tornillo tirador galvanizado



Ensamble

70-71

Tornillo ensamble sin punta negro + llave
Tornillo ensamble sin punta galvanizado + llave. Sin punta
Tornillo ensamble sin punta bricomatado + llave. Sin punta



Taco

72-73

Taco ABC
Taco universal
Taco clavo
Taco placa de yeso



DIN 571

74

DIN 571



Surtido

75

Surtido pequeño bricomatado
Surtido grande bricomatado



M



Rosca chapa DIN 7981 galvanizado

DIN 7981

Medidas					Código EAN	N.º de SPAX	
Ø rosca [mm]	Longitud [mm]	Cantidad [envase]	Modelo	Familia			
2,9 x	6,5	35	Blister M	A	—	4003530067808	5001010290650
	6,5	330	Paquete L	E	—	4003530068355	6001010290650
	9,5	35	Blister M	A	—	4003530067815	5001010290950
	9,5	300	Paquete L	E	—	4003530068362	6001010290950
	13	35	Blister M	A	—	4003530067822	5001010290130
	13	280	Paquete L	E	—	4003530068379	6001010290130
	16	35	Blister M	A	—	4003530067839	5001010290160
	16	250	Paquete L	E	—	4003530068386	6001010290160
	19	30	Blister M	A	—	4003530067846	5001010290190
	19	220	Paquete L	E	—	4003530068393	6001010290190
3,5 x	9,5	30	Blister M	A	—	4003530067853	5001010350950
	9,5	240	Paquete L	E	—	4003530068409	6001010350950
	13	25	Blister M	A	—	4003530067860	5001010350130
	13	220	Paquete L	E	—	4003530068416	6001010350130
	16	20	Blister M	A	—	4003530067877	5001010350160
	16	210	Paquete L	E	—	4003530068423	6001010350160
	19	20	Blister M	A	—	4003530067884	5001010350190
	19	200	Paquete L	E	—	4003530068430	6001010350190
	22	20	Blister M	A	—	4003530067891	5001010350220
	22	195	Paquete L	E	—	4003530068447	6001010350220
3,9 x	25	20	Blister M	A	—	4003530067907	5001010350250
	25	180	Paquete L	E	—	4003530068454	6001010350250
	9,5	20	Blister M	A	—	4003530067914	5001010390950
	9,5	230	Paquete L	E	—	4003530068461	6001010390950
	13	20	Blister M	A	—	4003530067921	5001010390130
	13	205	Paquete L	E	—	4003530068478	6001010390130
	16	20	Blister M	A	—	4003530067938	5001010390160
	16	190	Paquete L	E	—	4003530068485	6001010390160
	19	20	Blister M	A	—	4003530067945	5001010390190
	19	170	Paquete L	E	—	4003530068492	6001010390190
22	15	Blister M	A	—	4003530067952	5001010390220	
22	155	Paquete L	E	—	4003530068508	6001010390220	
25	15	Blister M	A	—	4003530067969	5001010390250	
25	140	Paquete L	E	—	4003530068515	6001010390250	



DIN 7981

Medidas					Código EAN	N.º de SPAX	
Ø rosca [mm]	Longitud [mm]	Cantidad [envase]	Modelo	Familia			
4,2 x	13	20	Blister M	A	—	4003530067976	5001010420130
	13	195	Paquete L	E	—	4003530068522	6001010420130
	16	20	Blister M	A	—	4003530067983	5001010420160
	16	180	Paquete L	E	—	4003530068539	6001010420160
	19	15	Blister M	A	—	4003530067990	5001010420190
	19	160	Paquete L	E	—	4003530068546	6001010420190
	22	15	Blister M	A	—	4003530068003	5001010420220
	22	150	Paquete L	E	—	4003530068553	6001010420220
	25	15	Blister M	A	—	4003530068010	5001010420250
	25	135	Paquete L	E	—	4003530068560	6001010420250
	32	15	Blister M	A	—	4003530068027	5001010420320
	32	125	Paquete L	E	—	4003530068577	6001010420320
4,8 x	19	10	Blister M	A	—	4003530068034	5001010480190
	19	135	Paquete L	E	—	4003530068584	6001010480190
	25	10	Blister M	A	—	4003530068041	5001010480250
	25	110	Paquete L	E	—	4003530068591	6001010480250
	32	10	Blister M	A	—	4003530068058	5001010480320
	32	95	Paquete L	E	—	4003530068607	6001010480320
	38	10	Blister M	A	—	4003530068065	5001010480380
	38	80	Paquete L	E	—	4003530068614	6001010480380
	50	5	Blister M	A	—	4003530068072	5001010480500
	50	70	Paquete L	E	—	4003530068621	6001010480500
5,5 x	19	10	Blister M	A	—	4003530068089	5001010550190
	19	105	Paquete L	E	—	4003530068638	6001010550190
	25	10	Blister M	A	—	4003530068096	5001010550250
	25	90	Paquete L	E	—	4003530068645	6001010550250
	32	10	Blister M	A	—	4003530068102	5001010550320
	32	80	Paquete L	E	—	4003530068652	6001010550320
	38	7	Blister M	A	—	4003530068119	5001010550380
	38	70	Paquete L	E	—	4003530068669	6001010550380



65 mm

Rosca chapa DIN 7981 galvanizado

M



56 mm

Rosca chapa DIN 7982 galvanizado

DIN 7982

Medidas					Código EAN	N.º de SPAX
Ø rosca [mm]	Longitud [mm]	Cantidad [envase]	Modelo	Familia		
2,9 x	9,5	35	Blister M	A	—	4003530043949 5021010290950
	9,5	300	Paquete L	E	—	4003530068676 6021010290950
	13	35	Blister M	A	—	4003530068126 5021010290130
	13	280	Paquete L	E	—	4003530068683 6021010290130
	16	35	Blister M	A	—	4003530068133 5021010290160
	16	250	Paquete L	E	—	4003530068690 6021010290160
	19	30	Blister M	A	—	4003530068140 5021010290190
	19	220	Paquete L	E	—	4003530068706 6021010290190
3,5 x	9,5	30	Blister M	A	—	4003530068157 5021010350950
	9,5	240	Paquete L	E	—	4003530068713 6021010350950
	13	25	Blister M	A	—	4003530068164 5021010350130
	13	220	Paquete L	E	—	4003530068720 6021010350130
	16	20	Blister M	A	—	4003530068171 5021010350160
	16	210	Paquete L	E	—	4003530068737 6021010350160
	19	20	Blister M	A	—	4003530068188 5021010350190
	19	200	Paquete L	E	—	4003530068744 6021010350190
	25	20	Blister M	A	—	4003530068201 5021010350250
	25	180	Paquete L	E	—	4003530068768 6021010350250
3,9 x	16	20	Blister M	A	—	4003530068218 5021010390160
	16	190	Paquete L	E	—	4003530068775 6021010390160
	19	20	Blister M	A	—	4003530068225 5021010390190
	19	170	Paquete L	E	—	4003530068782 6021010390190
	22	15	Blister M	A	—	4003530068232 5021010390220
	22	155	Paquete L	E	—	4003530068799 6021010390220
	25	15	Blister M	A	—	4003530068249 5021010390250
	25	140	Paquete L	E	—	4003530068805 6021010390250
	4,2 x	16	20	Blister M	A	—
16		180	Paquete L	E	—	4003530068812 6021010420160
19		15	Blister M	A	—	4003530068263 5021010420190
19		160	Paquete L	E	—	4003530068829 6021010420190
25		15	Blister M	A	—	4003530068270 5021010420250
25		135	Paquete L	E	—	4003530068836 6021010420250
32		15	Blister M	A	—	4003530068287 5021010420320
32		125	Paquete L	E	—	4003530068843 6021010420320



DIN 7982

Medidas					Código EAN	N.º de SPAX	
Ø rosca [mm]	Longitud [mm]	Cantidad [envase]	Modelo	Familia			
4,8 x	19	10	Blister M	A	–	4003530068294	5021010480190
	19	135	Paquete L	E	–	4003530068850	6021010480190
	25	10	Blister M	A	–	4003530068300	5021010480250
	25	110	Paquete L	E	–	4003530068867	6021010480250
	32	10	Blister M	A	–	4003530068317	5021010480320
	32	95	Paquete L	E	–	4003530068874	6021010480320
	38	10	Blister M	A	–	4003530068324	5021010480380
	38	80	Paquete L	E	–	4003530068881	6021010480380
5,5 x	32	10	Blister M	A	–	4003530068331	5021010550320
	32	80	Paquete L	E	–	4003530068898	6021010550320
	38	7	Blister M	A	–	4003530068348	5021010550380
	38	70	Paquete L	E	–	4003530068904	6021010550380



65 mm

Rosca chapa DIN 7982 galvanizado

M



56 mm

Rosca chapa 7504-N galvanizado

DIN 7504-N

Medidas					Código EAN	N.º de SPAX	
Ø rosca [mm]	Longitud [mm]	Cantidad [envase]	Modelo	Familia			
3,5 x	9,5	25	Blister M	A	—	4003530151774	5041010350950
	9,5	245	Paquete L	E	—	4003530152016	6041010350950
	13	25	Blister M	A	—	4003530151781	5041010350130
	13	220	Paquete L	E	—	4003530152023	6041010350130
	16	25	Blister M	A	—	4003530151798	5041010350160
	16	220	Paquete L	E	—	4003530152030	6041010350160
	19	20	Blister M	A	—	4003530151804	5041010350190
	19	190	Paquete L	E	—	4003530152047	6041010350190
	25	15	Blister M	A	—	4003530151811	5041010350250
	25	165	Paquete L	E	—	4003530152054	6041010350250
3,9 x	13	20	Blister M	A	—	4003530151828	5041010390130
	13	190	Paquete L	E	—	4003530152061	6041010390130
	16	20	Blister M	A	—	4003530151835	5041010390160
	16	190	Paquete L	E	—	4003530152078	6041010390160
	19	15	Blister M	A	—	4003530151842	5041010390190
	19	155	Paquete L	E	—	4003530152085	6041010390190
	25	15	Blister M	A	—	4003530151859	5041010390250
	25	145	Paquete L	E	—	4003530152092	6041010390250
	32	10	Blister M	A	—	4003530151866	5041010390320
	32	105	Paquete L	E	—	4003530152108	6041010390320
4,2 x	13	20	Blister M	A	—	4003530151873	5041010420130
	13	185	Paquete L	E	—	4003530152115	6041010420130
	16	20	Blister M	A	—	4003530151880	5041010420160
	16	170	Paquete L	E	—	4003530152122	6041010420160
	19	15	Blister M	A	—	4003530151897	5041010420190
	19	145	Paquete L	E	—	4003530152139	6041010420190
	22	15	Blister M	A	—	4003530151903	5041010420220
	22	125	Paquete L	E	—	4003530152146	6041010420220
	25	15	Blister M	A	—	4003530151910	5041010420250
	25	130	Paquete L	E	—	4003530152153	6041010420250
	32	10	Blister M	A	—	4003530151927	5041010420320
	32	115	Paquete L	E	—	4003530152160	6041010420320
	38	10	Blister M	A	—	4003530151934	5041010420380
	38	100	Paquete L	E	—	4003530152177	6041010420380



DIN 7504-N

Medidas					Código EAN	N.º de SPAX	
Ø rosca [mm]	Longitud [mm]	Cantidad [envase]	Modelo	Familia			
4,8 x	16	10	Blister M	A	–	4003530151941	5041010480160
	16	120	Paquete L	E	–	4003530152184	6041010480160
	19	10	Blister M	A	–	4003530151958	5041010480190
	19	115	Paquete L	E	–	4003530152191	6041010480190
	22	10	Blister M	A	–	4003530151965	5041010480220
	22	100	Paquete L	E	–	4003530152207	6041010480220
	25	10	Blister M	A	–	4003530151972	5041010480250
	25	100	Paquete L	E	–	4003530152214	6041010480250
	32	10	Blister M	A	–	4003530151989	5041010480320
	32	85	Paquete L	E	–	4003530152221	6041010480320
	38	5	Blister M	A	–	4003530151996	5041010480380
	38	70	Paquete L	E	–	4003530152238	6041010480380
5,5 x	32	5	Blister M	A	–	4003530152009	5041010550320
	32	50	Paquete L	E	–	4003530152245	6041010550320



Rosca chapa 7504-N galvanizado

M



56 mm

Rosca chapa 7504-P
galvanizado

L



65 mm

Rosca chapa 7504-P
galvanizado

DIN 7504-P

Medidas					Código EAN	N.º de SPAX
Ø rosca [mm]	Longitud [mm]	Cantidad [envase]	Modelo	Familia		
3,5 x	16	25	Blister M	A	—	4003530152733 5031010350160
	16	225	Paquete L	E	—	4003530152832 6031010350160
	19	20	Blister M	A	—	4003530152740 5031010350190
	19	195	Paquete L	E	—	4003530152849 6031010350190
	25	20	Blister M	A	—	4003530152757 5031010350250
	25	170	Paquete L	E	—	4003530152856 6031010350250
4,2 x	19	15	Blister M	A	—	4003530152764 5031010420190
	19	165	Paquete L	E	—	4003530152863 6031010420190
	25	15	Blister M	A	—	4003530152771 5031010420250
	25	140	Paquete L	E	—	4003530152870 6031010420250
	32	15	Blister M	A	—	4003530152788 5031010420320
	32	125	Paquete L	E	—	4003530152887 6031010420320
	38	10	Blister M	A	—	4003530152795 5031010420380
	38	100	Paquete L	E	—	4003530152894 6031010420380
	4,8 x	25	10	Blister M	A	—
25		115	Paquete L	E	—	4003530152900 6031010480250
32		10	Blister M	A	—	4003530152818 5031010480320
32		85	Paquete L	E	—	4003530152917 6031010480320
5,5 x	32	5	Blister M	A	—	4003530152825 5031010550320
	32	50	Paquete L	E	—	4003530152924 6031010550320



Alcayata galvanizada

Medidas					-	Código EAN	N.º de SPAX
Ø rosca [mm]	Longitud [mm]	Cantidad [envase]	Modelo	Familia			
2,0 x	30	20	Blister M	A	-	4003530059759	5091020200300
	30	135	Paquete L	E	-	4003530153099	6091020200300
2,5 x	40	15	Blister M	A	-	4003530059766	5091020250400
	40	115	Paquete L	E	-	4003530153105	6091020250400
3,0 x	50	12	Blister M	A	-	4003530059773	5091020300500
	50	80	Paquete L	E	-	4003530153112	6091020300500
3,5 x	60	10	Blister M	A	-	4003530059780	5091020350600
	60	65	Paquete L	E	-	4003530153129	6091020350600
4,0 x	70	7	Blister M	A	-	4003530059797	5091020400700
	70	45	Paquete L	E	-	4003530153136	6091020400700
5,0 x	90	5	Blister MH	A	-	4003530059803	5091020501000
	90	25	Paquete L	E	-	4003530153150	6091020501000

M



56 mm

Alcayata galvanizada

L



65 mm

Alcayata galvanizada

M



56 mm

Alcayata blanca

Alcayata blanca

Medidas					Código EAN	N.º de SPAX
Ø rosca [mm]	Longitud [mm]	Cantidad [envase]	Modelo	Familia		
2,0 x	25	15	Blister M	A	–	4003530067006 5101020200250
2,5 x	30	12	Blister M	A	–	4003530067013 5101020250300
3,0 x	40	10	Blister M	A	–	4003530067020 5101020300400
	50	7	Blister M	A	–	4003530067037 5101020300500

M



56 mm

Alcayata + taco

Alcayata + taco

Medidas					Código EAN	N.º de SPAX
Ø rosca [mm]	Longitud [mm]	Cantidad [envase]	Modelo	Familia		
2,5 x	40	10	Blister M	A	–	4003530067464 5091050250400
3,5 x	60	7	Blister M	A	–	4003530067471 5091050350600
4,0 x	70	5	Blister MH	A	–	4003530067488 5091050400700



Hembrilla cerrada

Medidas					-	Código EAN	N.º de SPAX
Ø rosca [mm]	Longitud [mm]	Cantidad [envase]	Modelo	Familia			
2,0 x	25	22	Blister M	A	-	4003530059599	5091000200250
	25	135	Paquete L	E	-	4003530152931	6091000200250
	30	20	Blister M	A	-	4003530059605	5091000200300
	30	135	Paquete L	E	-	4003530152948	6091000200300
2,5 x	40	15	Blister M	A	-	4003530059612	5091000250400
	40	115	Paquete L	E	-	4003530152955	6091000250400
3,0 x	40	13	Blister M	A	-	4003530059629	5091000300400
	40	85	Paquete L	E	-	4003530152962	6091000300400
	50	12	Blister M	A	-	4003530059636	5091000300500
	50	80	Paquete L	E	-	4003530152979	6091000300500
3,5 x	60	10	Blister M	A	-	4003530059643	5091000350600
	60	65	Paquete L	E	-	4003530152986	6091000350600
4,0 x	70	7	Blister M	A	-	4003530059650	5091000400700
	70	45	Paquete L	E	-	4003530152993	6091000400700
4,5 x	80	6	Blister MH	A	-	4003530059667	5091000450800
	80	35	Paquete L	E	-	4003530153006	6091000450800
5,0 x	100	5	Blister MH	A	-	4003530059674	5091000501000
	100	25	Paquete L	E	-	4003530153013	6091000501000

M



56 mm

Hembrilla cerrada galvanizada

L



65 mm

Hembrilla cerrada galvanizada

M



56 mm

Hembrilla cerrada blanca

M



56 mm

Hembrilla cerrada + taco

Hembrilla cerrada blanca

Medidas					Código EAN	N.º de SPAX
Ø rosca [mm]	Longitud [mm]	Cantidad [envase]	Modelo	Familia		
2,0 x	25	15	Blister M	A	–	4003530066924 5101000200250
2,5 x	30	12	Blister M	A	–	4003530066931 5101000250300
3,0 x	40	10	Blister M	A	–	4003530066948 5101000300400
	50	7	Blister M	A	–	4003530066955 5101000300500

Hembrilla cerrada + taco

Medidas					Código EAN	N.º de SPAX
Ø rosca [mm]	Longitud [mm]	Cantidad [envase]	Modelo	Familia		
2,5 x	40	10	Blister M	A	–	4003530067525 5091030250400
3,5 x	60	7	Blister M	A	–	4003530067532 5091030350600
4,0 x	70	5	Blister MH	A	–	4003530067549 5091030400700



Hembrilla abierta

Medidas					-	Código EAN	N.º de SPAX
Ø rosca [mm]	Longitud [mm]	Cantidad [envase]	Modelo	Familia			
2,0 x	30	20	Blister M	A	-	4003530059681	5091010200300
	30	135	Paquete L	E	-	4003530153020	6091010200300
2,5 x	40	15	Blister M	A	-	4003530059698	5091010250400
	40	115	Paquete L	E	-	4003530153037	6091010250400
3,0 x	50	12	Blister M	A	-	4003530059704	5091010300500
	50	80	Paquete L	E	-	4003530153044	6091010300500
3,5 x	60	10	Blister M	A	-	4003530059711	5091010350600
	60	65	Paquete L	E	-	4003530153051	6091010350600
4,0 x	70	7	Blister M	A	-	4003530059728	5091010400700
	70	45	Paquete L	E	-	4003530153068	6091010400700
4,5 x	80	6	Blister MH	A	-	4003530059735	5091010450800
	80	35	Paquete L	E	-	4003530153075	6091010450800
5,0 x	100	5	Blister MH	A	-	4003530059742	5091010501000
	100	25	Paquete L	E	-	4003530153082	6091010501000

M



56 mm

Hembrilla abierta

L



65 mm

Hembrilla abierta

M



56 mm

Hembrilla abierta blanca

MH



56 mm

Hembrilla abierta + taco

Hembrilla abierta blanca

Medidas					Código EAN	N.º de SPAX
Ø rosca [mm]	Longitud [mm]	Cantidad [envase]	Modelo	Familia		
2,0 x	25	15	Blister M	A	–	4003530066962 5101010200250
2,5 x	30	12	Blister M	A	–	4003530066979 5101010250300
3,0 x	40	10	Blister M	A	–	4003530066986 5101010300400
	50	7	Blister M	A	–	4003530066993 5101010300500

Hembrilla abierta + taco

Medidas					Código EAN	N.º de SPAX
Ø rosca [mm]	Longitud [mm]	Cantidad [envase]	Modelo	Familia		
2,5 x	40	10	Blister M	A	–	4003530067495 5091040250400
3,5 x	60	7	Blister M	A	–	4003530067501 5091040350600
4,0 x	70	5	Blister MH	A	–	4003530067518 5091040400700



GIX

Medidas					Código EAN	N.º de SPAX	
Ø rosca [mm]	Longitud [mm]	Cantidad [envase]	Modelo	Familia			
3,5 x	25	20	Blister M	A	–	4003530154003	5061170350250
	25	190	Paquete L	E	–	4003530154102	6061170350250
	35	15	Blister M	A	–	4003530154010	5061170350350
	35	165	Paquete L	E	–	4003530154119	6061170350350
	45	10	Blister M	A	–	4003530154027	5061170350450
	45	150	Paquete L	E	–	4003530154126	6061170350450
3,9 x	25	15	Blister M	A	–	4003530154034	5061170390250
	25	135	Paquete L	E	–	4003530154133	6061170390250
	35	15	Blister M	A	–	4003530154041	5061170390350
	35	120	Paquete L	E	–	4003530154140	6061170390350
	45	10	Blister M	A	–	4003530154058	5061170390450
	45	115	Paquete L	E	–	4003530154164	6061170390450
	55	10	Blister M	A	–	4003530154065	5061170390550
	55	100	Paquete L	E	–	4003530154171	6061170390550

M



56 mm

GIX, tornillo fosfatado para placa de yeso

GIX autotaladrante

Medidas					Código EAN	N.º de SPAX
Ø rosca [mm]	Longitud [mm]	Cantidad [envase]	Modelo	Familia		
3,5 x	25	15	Blister	–	4003530154072	5061170350251
	25	180	Paquete L	–	4003530154188	6061170350251
	35	10	Blister	–	4003530154089	5061170350351
	35	160	Paquete L	–	4003530154195	6061170350351

L



65 mm

GIX, tornillo fosfatado para placa de yeso autotaladrante

MH



56 mm

Tornillo tirador galvanizado

Tornillo para tirador

Medidas					Código EAN	N.º de SPAX	
Ø rosca [mm]	Longitud [mm]	Cantidad [envase]	Modelo	Familia			
4,0 x	15	22	Blister M	A	—	4003530067044	5631010400150
	15	295	Paquete L	E	—	4003530151712	6631010400150
	20	20	Blister M	A	—	4003530067051	5631010400200
	20	220	Paquete L	E	—	4003530151729	6631010400200
	25	18	Blister MH	A	—	4003530067068	5631010400250
	25	170	Paquete L	E	—	4003530151736	6631010400250
	30	16	Blister MH	A	—	4003530067075	5631010400300
	30	140	Paquete L	E	—	4003530151743	6631010400300
	40	14	Blister MH	A	—	4003530067082	5631010400400
	40	90	Paquete L	E	—	4003530151750	6631010400400
	50	10	Blister MH	A	—	4003530067099	5631010400500
	50	70	Paquete L	E	—	4003530151767	6631010400500

M



56 mm

Tornillo ensamble sin punta negro + llave

Ensamble sin punta negro

Medidas					Código EAN	N.º de SPAX	
Ø rosca [mm]	Longitud [mm]	Cantidad [envase]	Modelo	Familia			
5,0 x	50	5	Blister M	A	—	4003530151675	5641040500500
	50	60	Paquete L	E	—	8431832230044	6641040500500
7,0 x	50	4	Blister M	A	—	4003530151682	5641040700500
	50	40	Paquete L	E	—	8431832230051	6641040700500



Ensamble sin punta galvanizado

Medidas					Código EAN	N.º de SPAX	
Ø rosca [mm]	Longitud [mm]	Cantidad [envase]	Modelo	Familia			
5,0 x	50	5	Blister M	A	–	4003530067105	5641010500500
	50	60	Paquete L	E	–	8431832230006	6641010500500
7,0 x	50	5	Blister M	A	–	4003530067112	5641010700500
	50	40	Paquete L	E	–	8431832230013	6641010700500



Tornillo ensamble sin punta galvanizado + llave. Sin punta

Ensamble sin punta bricomatado

Medidas					Código EAN	N.º de SPAX	
Ø rosca [mm]	Longitud [mm]	Cantidad [envase]	Modelo	Familia			
5,0 x	50	5	Blister M	A	–	4003530151651	5641020500500
	50	60	Paquete L	E	–	8431832230020	6641020500500
7,0 x	50	4	Blister M	A	–	4003530151668	5641020700500
	50	40	Paquete L	E	–	8431832230037	6641020700500



Tornillo ensamble sin punta bricomatado + llave. Sin punta

M



56 mm

L



65 mm

Taco ABC

MH



56 mm

L



65 mm

Taco universal

Taco ABC

Medidas				Código EAN	N.º de SPAX	
Ø rosca [mm]	Cantidad [envase]	Modelo	Familia			
5,0 x	15	Blister M	A	—	4003530065521	5010000500000
	180	Paquete L	E	—	4003530153280	6010000500000
6,0 x	10	Blister M	A	—	4003530065545	5010000600000
	100	Paquete L	E	—	4003530153297	6010000600000
7,0 x	8	Blister M	A	—	4003530065415	5010000700000
8,0 x	6	Blister M	A	—	4003530065422	5010000800000
	45	Paquete L	E	—	4003530153310	6010000800000
10,0 x	4	Blister M	A	—	4003530065439	5010001000000
	25	Paquete L	E	—	4003530153327	6010001000000
12,0 x	3	Blister M	A	—	4003530065538	5010001200000
	15	Paquete L	E	—	4003530153334	6010001200000

Taco universal

Medidas				Código EAN	N.º de SPAX		
Ø rosca [mm]	Longitud [mm]	Cantidad [envase]	Modelo			Familia	
6,0 x	36	6	Blister M	A	—	4003530065507	5020000600360
	36	70	Paquete L	E	—	4003530153341	6020000600360
8,0 x	52	4	Blister M	A	—	4003530065491	5020000800500
	52	30	Paquete L	E	—	4003530153358	6020000800500
10,0 x	62	4	Blister MH	A	—	4003530065514	5020001000600
	62	15	Paquete L	E	—	4003530153365	6020001000600



Taco clavo

Medidas					Código EAN	N.º de SPAX	
Ø rosca [mm]	Longitud [mm]	Cantidad [envase]	Modelo	Familia			
5,0 x	30	40	Paquete L	E	–	4003530065804	6030000500300
	50	8	Blister MH	A	–	4003530065569	5030000500500
	50	30	Paquete L	E	–	4003530065811	6030000500500
6,0 x	40	8	Blister MH	A	–	4003530065576	5030000600400
	40	25	Paquete L	E	–	4003530065828	6030000600400
	60	8	Blister L	A	–	4003530065583	5030000600600
	60	20	Paquete L	E	–	4003530065835	6030000600600
	80	20	Paquete L	E	–	4003530065842	6030000600800
8,0 x	80	4	Blister L	A	–	4003530065613	5030000800800
	80	10	Paquete L	E	–	4003530065859	6030000800800
	100	4	Blister L	A	–	4003530065668	5030000801000

Taco placa de yeso

Medidas					Código EAN	N.º de SPAX	
Ø rosca [mm]	Longitud [mm]	Cantidad [envase]	Modelo	Familia			
10,0 x	47	3	Blister MH	A	–	4003530153266	5040001000470
	47	15	Paquete L	E	–	4003530153372	6040001000470

L



56 mm

L



65 mm

Taco clavo

MH



56 mm

Taco placa de yeso

L



65 mm

Taco ABC

DIN 571

Medidas					Código EAN	N.º de SPAX
Ø rosca [mm]	Longitud [mm]	Cantidad [envase]	Modelo	Familia		
5,0 x	30	75	Paquete L	E	—	4003530053511 6061010500300
	40	60	Paquete L	E	—	4003530053535 6061010500400
	50	50	Paquete L	E	—	4003530053559 6061010500500
6,0 x	30	75	Paquete L	E	—	4003530053597 6061010600300
	40	60	Paquete L	E	—	4003530053610 6061010600400
	50	50	Paquete L	E	—	4003530053634 6061010600500
	60	40	Paquete L	E	—	4003530053641 6061010600600
	70	25	Paquete L	E	—	4003530053658 6061010600700
7,0 x	80	25	Paquete L	E	—	4003530053665 6061010600800
	60	25	Paquete L	E	—	4003530053702 6061010700600
	70	20	Paquete L	E	—	4003530053719 6061010700700
8,0 x	80	20	Paquete L	E	—	4003530053726 6061010700800
	40	45	Paquete L	E	—	4003530053764 6061010800400
	50	30	Paquete L	E	—	4003530053771 6061010800500
	60	25	Paquete L	E	—	4003530053788 6061010800600
	70	20	Paquete L	E	—	4003530053795 6061010800700
	80	20	Paquete L	E	—	4003530053801 6061010800800



Surtido pequeño bricomatado

	Código EAN	N.º de SPAX
-	4003530027017	5486000000000

Surtido grande bricomatado

	Código EAN	N.º de SPAX
-	4003530027000	5485000000000



Surtido pequeño bricomatado



SPAX TORNILLERIA MADRID, S.A.U.

GRUPO ALTENLOH, BRINCK & CO

C/PALIER, 52 · POLIGONO CIUDAD DEL AUTOMOVIL
E-28914 LEGANÉS (MADRID/ESPAÑA) · TEL 91-693 99 11 · FAX 91-693 87 78
madrid@spax.com · www.spax.com

SPAX SAFER BARCELONA, S.L.

GRUPO ALTENLOH, BRINCK & CO

C/INDUSTRIA, 12 · POLIGONO INDUSTRIAL CIDESA
E-08740 SAN ANDRES DE LA BARCA (BARCELONA/ESPAÑA)
TEL 93-653 34 00 · FAX 93-653 24 22 · barcelona@spax.com · www.spax.com